

## EFFICIENT RADIATORS

Rointe are specialists in electric heating solutions. That's why we manufacture a wide range of radiators including WiFi connected, fluid filled, liquid stone and our new natural stone core. All our radiators include **energy optimisation technologies which allow energy reduction and stable temperatures** through high-frequency electrical micro-impulses. They **increase your savings without affecting comfort**.

WiFi



D SERIES

WiFi



BELIZE

WiFi



OLYMPIA

SYGMA



PALAO



## RADIATOR SIZING\*

### Thermal Fluid Radiators

Standard height (D Series, Belize & Sygma)

| Climate   | MILD                                   | COLD                                   | VERY COLD                              | EXTRA COLD                             |
|---|--|--|--|--|
| R.T.C.  | 0.75 heating elements / m <sup>2</sup> | 0.80 heating elements / m <sup>2</sup> | 0.85 heating elements / m <sup>2</sup> | 0.90 heating elements / m <sup>2</sup> |
| 3 heating elements                              | Up to 4 m <sup>2</sup>                 | Up to 4 m <sup>2</sup>                 | Up to 4 m <sup>2</sup>                 | Up to 3 m <sup>2</sup>                 |
| 4 heating elements                              | Up to 5 m <sup>2</sup>                 | Up to 5 m <sup>2</sup>                 | Up to 5 m <sup>2</sup>                 | Up to 4 m <sup>2</sup>                 |
| 5 heating elements                              | Up to 7 m <sup>2</sup>                 | Up to 6 m <sup>2</sup>                 | Up to 6 m <sup>2</sup>                 | Up to 6 m <sup>2</sup>                 |
| 6 heating elements                              | Up to 8 m <sup>2</sup>                 | Up to 8 m <sup>2</sup>                 | Up to 7 m <sup>2</sup>                 | Up to 7 m <sup>2</sup>                 |
| 7 heating elements                              | Up to 9 m <sup>2</sup>                 | Up to 9 m <sup>2</sup>                 | Up to 8 m <sup>2</sup>                 | Up to 8 m <sup>2</sup>                 |
| 8 heating elements                              | Up to 11 m <sup>2</sup>                | Up to 10 m <sup>2</sup>                | Up to 9 m <sup>2</sup>                 | Up to 9 m <sup>2</sup>                 |
| 9 heating elements                              | Up to 12 m <sup>2</sup>                | Up to 11 m <sup>2</sup>                | Up to 11 m <sup>2</sup>                | Up to 10 m <sup>2</sup>                |
| 10 heating elements                             | Up to 13 m <sup>2</sup>                | Up to 13 m <sup>2</sup>                | Up to 12 m <sup>2</sup>                | Up to 11 m <sup>2</sup>                |
| 11 heating elements                             | Up to 15 m <sup>2</sup>                | Up to 14 m <sup>2</sup>                | Up to 13 m <sup>2</sup>                | Up to 12 m <sup>2</sup>                |
| 12 heating elements                             | Up to 16 m <sup>2</sup>                | Up to 15 m <sup>2</sup>                | Up to 14 m <sup>2</sup>                | Up to 13 m <sup>2</sup>                |
| 13 heating elements                             | Up to 17 m <sup>2</sup>                | Up to 16 m <sup>2</sup>                | Up to 15 m <sup>2</sup>                | Up to 14 m <sup>2</sup>                |
| 14 heating elements                             | Up to 19 m <sup>2</sup>                | Up to 18 m <sup>2</sup>                | Up to 16 m <sup>2</sup>                | Up to 16 m <sup>2</sup>                |
| 15 heating elements                             | Up to 20 m <sup>2</sup>                | Up to 19 m <sup>2</sup>                | Up to 18 m <sup>2</sup>                | Up to 17 m <sup>2</sup>                |
| Radiators reduced height (Belize & Sygma) short |  |  |  |  |
| 11 heating elements                             | Up to 9 m <sup>2</sup>                 | Up to 8 m <sup>2</sup>                 | Up to 7 m <sup>2</sup>                 | Up to 6 m <sup>2</sup>                 |
| 13 heating elements                             | Up to 10 m <sup>2</sup>                | Up to 9 m <sup>2</sup>                 | Up to 8 m <sup>2</sup>                 | Up to 7 m <sup>2</sup>                 |
| 15 heating elements                             | Up to 12 m <sup>2</sup>                | Up to 11 m <sup>2</sup>                | Up to 10 m <sup>2</sup>                | Up to 9 m <sup>2</sup>                 |

### Natural Stone Radiators

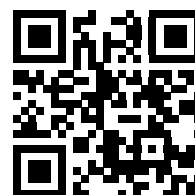
Standard height (Olympia & Aria)

|                     |                         |                         |                         |                         |
|---------------------|-------------------------|-------------------------|-------------------------|-------------------------|
| 3 heating elements  | Up to 6 m <sup>2</sup>  | Up to 5 m <sup>2</sup>  | Up to 5 m <sup>2</sup>  | Up to 4 m <sup>2</sup>  |
| 5 heating elements  | Up to 8 m <sup>2</sup>  | Up to 8 m <sup>2</sup>  | Up to 7 m <sup>2</sup>  | Up to 6 m <sup>2</sup>  |
| 6 heating elements  | Up to 11 m <sup>2</sup> | Up to 10 m <sup>2</sup> | Up to 9 m <sup>2</sup>  | Up to 9 m <sup>2</sup>  |
| 8 heating elements  | Up to 14 m <sup>2</sup> | Up to 13 m <sup>2</sup> | Up to 12 m <sup>2</sup> | Up to 11 m <sup>2</sup> |
| 9 heating elements  | Up to 17 m <sup>2</sup> | Up to 15 m <sup>2</sup> | Up to 14 m <sup>2</sup> | Up to 13 m <sup>2</sup> |
| 11 heating elements | Up to 19 m <sup>2</sup> | Up to 18 m <sup>2</sup> | Up to 16 m <sup>2</sup> | Up to 15 m <sup>2</sup> |

\* These are approximate calculations and should be considered as such. For correct sizing, it is necessary for Rointe to conduct a free Technical Study taking into account insulation, climate zone, ceiling height, orientation and other parameters that may affect final product performance.

Ready to discover Rointe smart heating?

Scan the QR code to see our latest catalogue!



For more information about our products, please contact us:

+302 821 087 776  
info@maxkonnicttech.eu



MUCH MORE THAN

RADIATORS



## STYLISH TOWEL RAILS

Rointe electric towel rails are the perfect combination between design and technology, equipped with many smart features. Plus our **new BATHROOM COLLECTION includes different designs with a choice of control panels** that can be combined to create a 100% personalised heated towel rail.



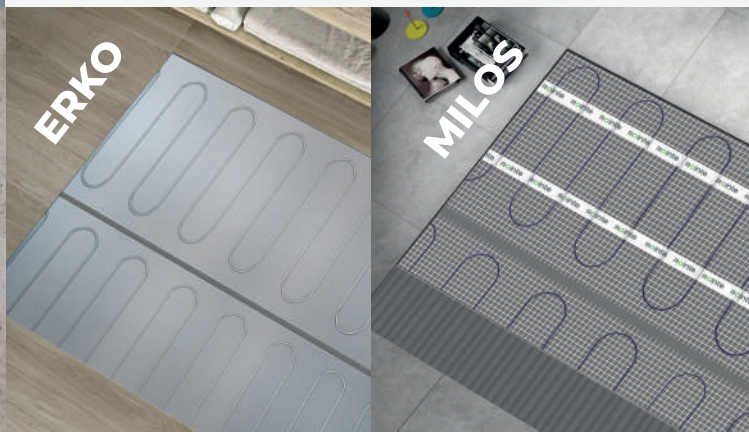
## ECOLOGICAL HEAT PUMP

The Rointe Dalis Pro electric heat pump and storage tank is an all-in-one system, designed for **high-efficiency production of domestic hot water**. Easy to install, this advanced air to water heat pump system is the ideal partner to Rointe electric radiators for a **complete low carbon heating and hot water system**, or as a standalone system.



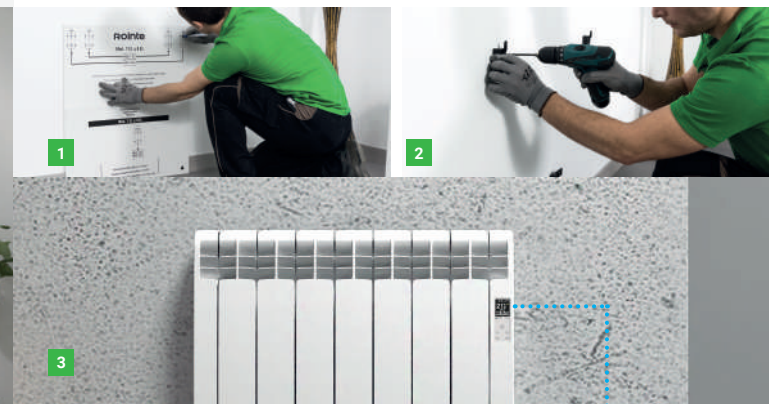
## UNDERFLOOR HEATING

**Discover invisible, space-saving underfloor heating solutions.** If you prefer to not install heating like radiators on the wall but still need unparalleled comfort, our electric underfloor heating solutions are perfect for you. All you need to do is install the system under the floor of your home and fit an elegant and discreet control thermostat. There are two options available dependent on your flooring.



## EASY TO INSTALL HEATING

Our products are really simple to install. For example, our radiators include an assembly kit, manual and all the necessary elements for a quick and easy installation. Place the template, screw in the brackets, slide the product in and plug it in. **It's as easy as 1,2,3!**



## INSTALL, CONNECT & ENJOY

**Rointe products with Wi-Fi connection connect directly to your home router**, without the need to purchase additional accessories such as a smartbox or other devices like gateways, allowing a higher transmission speed and a smarter, more economical installation.



2 Rointe smart apps:



Rointe Connect



Rointe Lite

